



16 Potteries Lane

Chilton, Oxfordshire, OX11 0TZ

16 Potteries Lane, Chilton, Oxfordshire, OX11 0TZ

Situated within the sought after Chilton's Chestnut Fields development is this immaculately presented three bedroom family home.

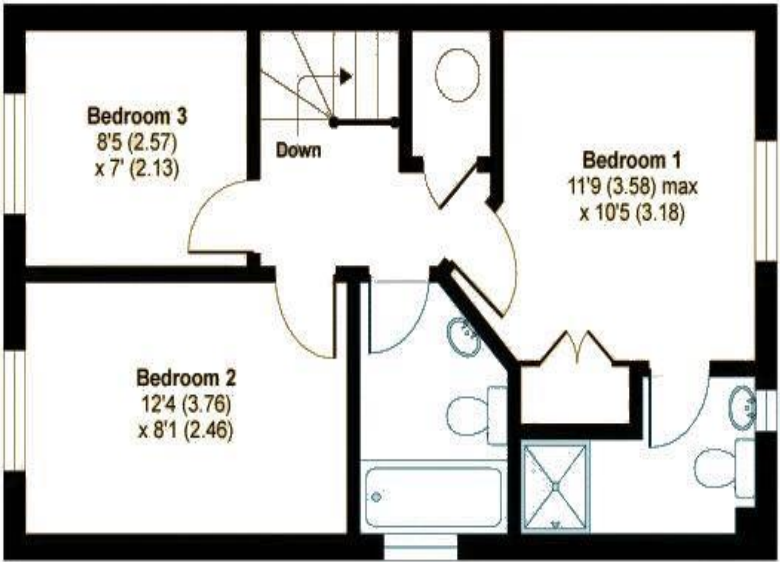
The property boasts a downstairs cloakroom, light and airy living room with solid oak flooring, a modern kitchen with dining area over looking the rear garden, three well proportioned bedrooms, a family bathroom and en-suite shower room.

Chilton Fields is a well planned development on the edge of Chilton Village. The property is within the Chilton county primary school catchment area and is well placed for easy access to Harwell Science Park and the A34. Didcot is just 4 miles away and offers exclusive shopping and leisure facilities and a fast connection to London from Didcot Parkway (40 mins).

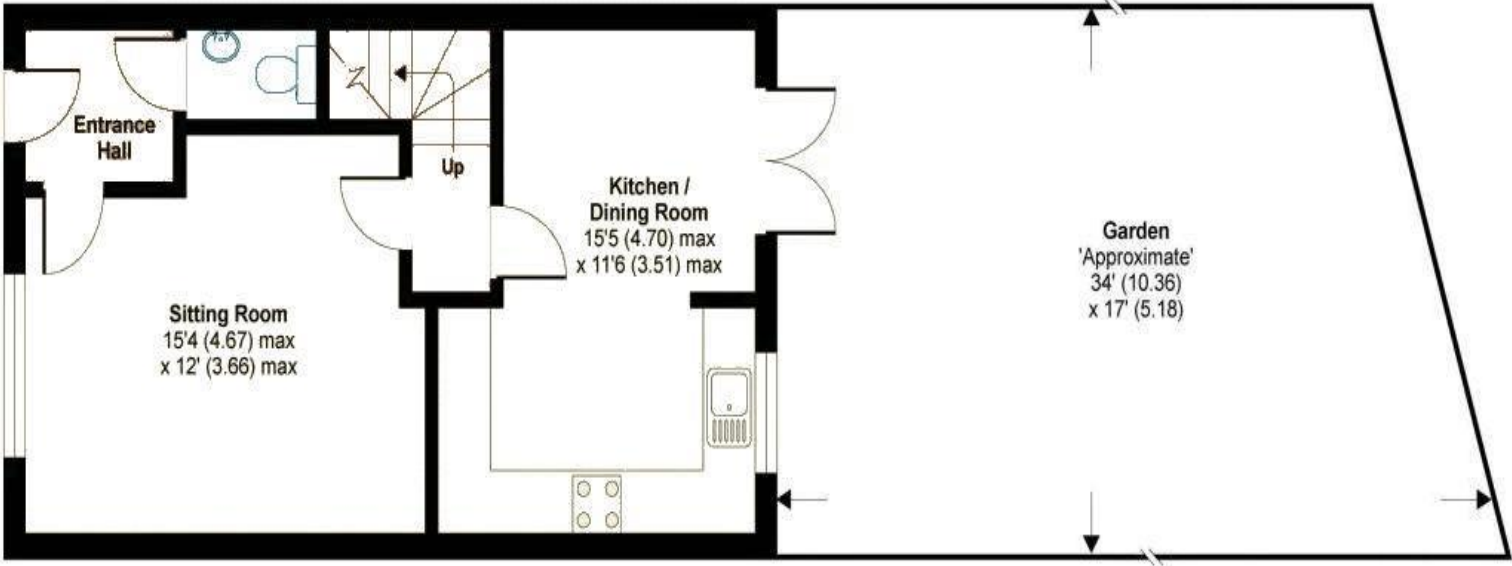




- Modern kitchen diner with french doors leading to rear garden
- Gas centrally heated and UPVC double glazed windows
- Off street parking to the front for two vehicles side by side
- En-suite shower room to the largest bedrooms
- Developed by David Wilson in 2013
- Situated within close proximity to north and south bound access for the A34
- Local Authority: Vale of White Horse District Council
- Council Tax Band: D
- Tenure: Freehold



FIRST FLOOR



GROUND FLOOR



Score	Energy rating	Current	Potential
92+	A		92 A
81-91	B		
69-80	C	79 C	
55-68	D		
39-54	E		
21-38	F		
1-20	G		

Important Notice
Thomas Merrifield and their clients give notice that:

1. They are not authorised to make or give any representations or warranties in relation to the property either here or elsewhere, either on their own behalf or on behalf of their client or otherwise. They assume no responsibility for any statement that may be made in these particulars. These particulars do not form any part of any offer or contract and must not be relied upon as statements or representations of fact.
2. Any areas, measurements or distances are approximate. The text, photographs and plans are for guidance only and are not necessarily comprehensive. It should not be assumed that the property has all necessary planning, building regulation or other consents and Thomas Merrifield have not tested any services, equipment or facilities. Purchasers must satisfy themselves by inspection or otherwise.